

The background is a watercolor painting of a forest. A large, textured tree trunk is prominent on the right side, with its roots spreading out on the ground. The ground is covered in brown and orange tones, suggesting fallen leaves or soil. In the background, there are more trees and a path that leads into the distance. The overall color palette is dominated by earthy tones like brown, orange, and green, with some darker areas in the shadows.

ANNAMARI KUVAJA

Painting the Island

140 Watercolor landscape
paintings

from Laajasalo

Painting the Island

140 Watercolor landscape paintings from Laajasalo

by
Annamari Kuvaja

Painting the Island - 140 Watercolor landscape paintings from Laajasalo

© 2024 Annamari Kuvaja

All Rights Reserved

Kustantaja: BoD – Books on Demand, Helsinki, Suomi

Valmistaja: BoD – Books on Demand, Norderstedt, Saksa

All art in this book are copyright Annamari Kuvaja. No part of this book may be reproduced or transmitted in any form or by any means electronic, mechanical, including photocopying, xerography and video recording, without written permission from Annamari Kuvaja.

Art and layout by Annamari Kuvaja

ISBN: 978-952-80-7211-9

Website: www.illuzz.com, email: annamari.k.kuvaja@gmail.com, Instagram: [@illuzz.art](https://www.instagram.com/illuzz.art)

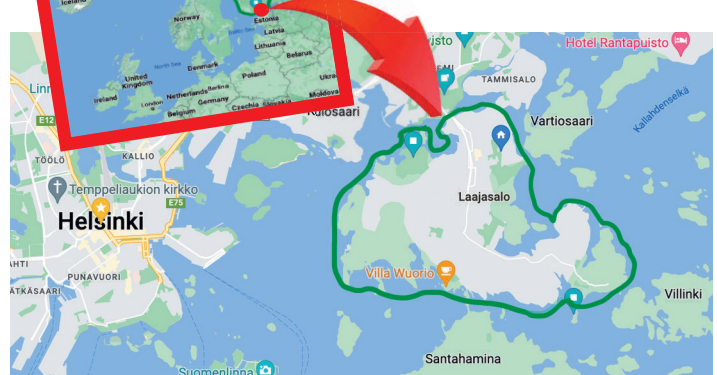
Annamari Kuvaja is a Finnish Artist who has lived in the Island of Laajasalo since 2014. Enchanted by the lushy nature and surrounding sea, she started to capture the landscapes that she felt connected with.

Annamari works as a game artist making both 2D and 3D art for mobile games. While she works primarily with the digital media, she loves getting outdoors. She prefers to work with watercolors, as they dry quickly and allow an efficient workflow when capturing the quickly changing light. At fastest her watercolors are done in half an hour, however, her paintings can take up to three hours.

The locations are mentioned on the top of the paintings. When there is no mention, it means all the landscapes are from the previously mentioned location until a new one is introduced.

Words from the artist:

“You are holding in your hands a book that contains my work from several years. I sincerely hope you will enjoy the experience of going with me through the nature of beautiful Laajasalo.”

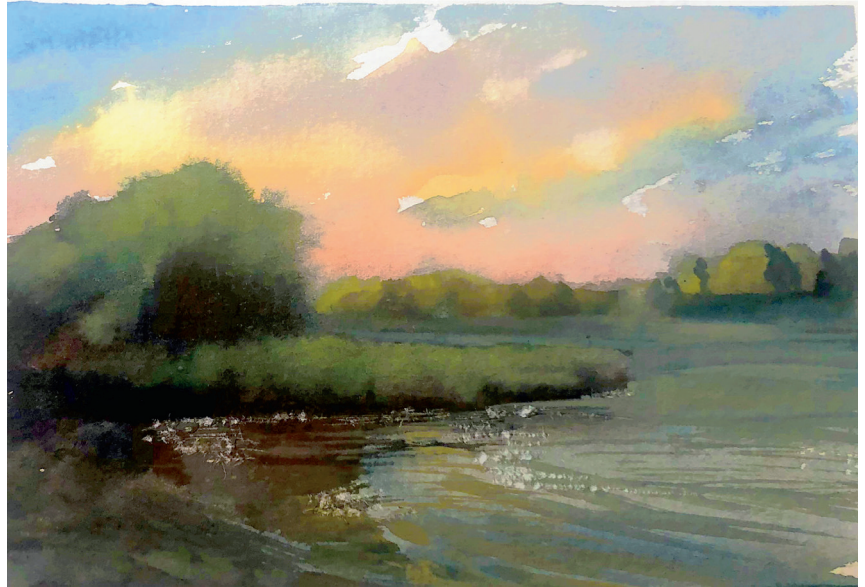
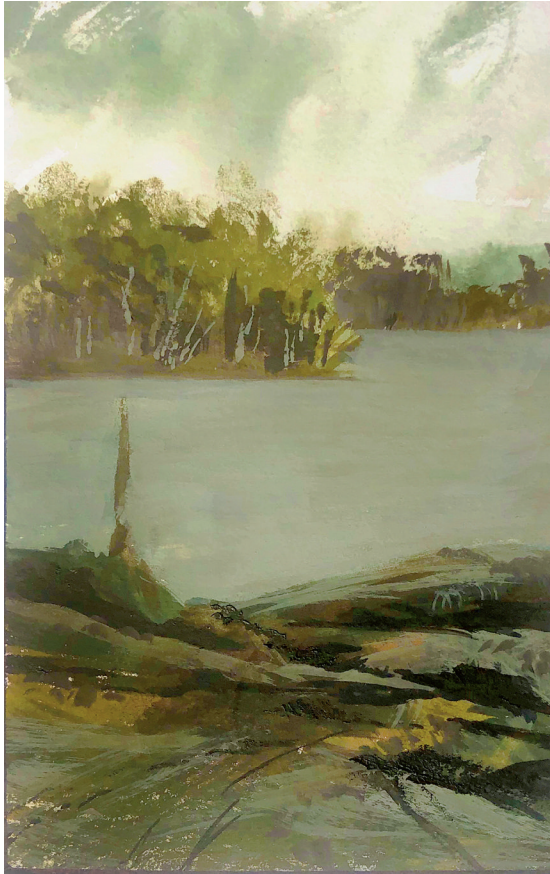




The typical set-up

1. Masking liquid. Often not used outdoors.
2. Water bottle with clean water.
3. Spray bottle to wake up the watercolor and to wet the paper sometimes.
4. Water container.
5. Orange waterproof pen to draw the base sketch with.
6. Paper cutter. Convenient for scratching some details.
7. Palette with watercolors that are taken from watercolor tubes.
8. Masking tape to mask the edges of the paintings.
9. Four brushes: two flat ones, one mop and one sable bristle brush for a more accurate working.
10. Towel to wipe off excess water from brushes.
11. Sketchbook with watercolor paper, 300 grams.

YLISKYLÄ BEACH, SPREAD 1, SPRING




The beach is one of my absolute favorite places, I used to live close by it. Here are some sketches from springtime.



YLISKYLÄ BEACH, SPREAD 2, WINTER



Winter is a challenging painting time, but the views and contrasts are unique.



Welcome to "Painting the Island" by Annamari Kuvaja - a heartfelt exploration of the captivating landscapes of Laajasalo. In this collection, Annamari invites you to join her on a journey through the intricate beauty and timeless charm of the island environment.

With brush in hand and passion in heart, Annamari has spent years admiring the views of Laajasalo, capturing the essence of the island's natural splendor. Each painting reflects her connection to the land, not only by its physical features but also the spirit that infuses every rock, tree, and wave.

In "Painting the Island," you'll discover scenes rendered with a unique perspective and an artist's eye for color. From sunlit summer scenes to tranquil moments, each painting invites you to pause, breathe, and immerse yourself in the quiet grandeur of the island.

